

⚠ WARNING ⚠
DO NOT GET UNDER A VEHICLE THAT IS SUPPORTED BY A JACK - USE VEHICLE SUPPORT STANDS

Maintenance Instructions:

- Remove all dirt and rust from jack on a regular basis.
- Lubricate extension screw and handle socket pivot points with engine oil on regular basis.
- To add oil push ram down fully, remove rubber plug from reservoir, and fill with correct oil to plug hole with jack in upright position.
- Use Ritch™ Hydraulic Jack Oil or equivalent.

Safe usage instructions:

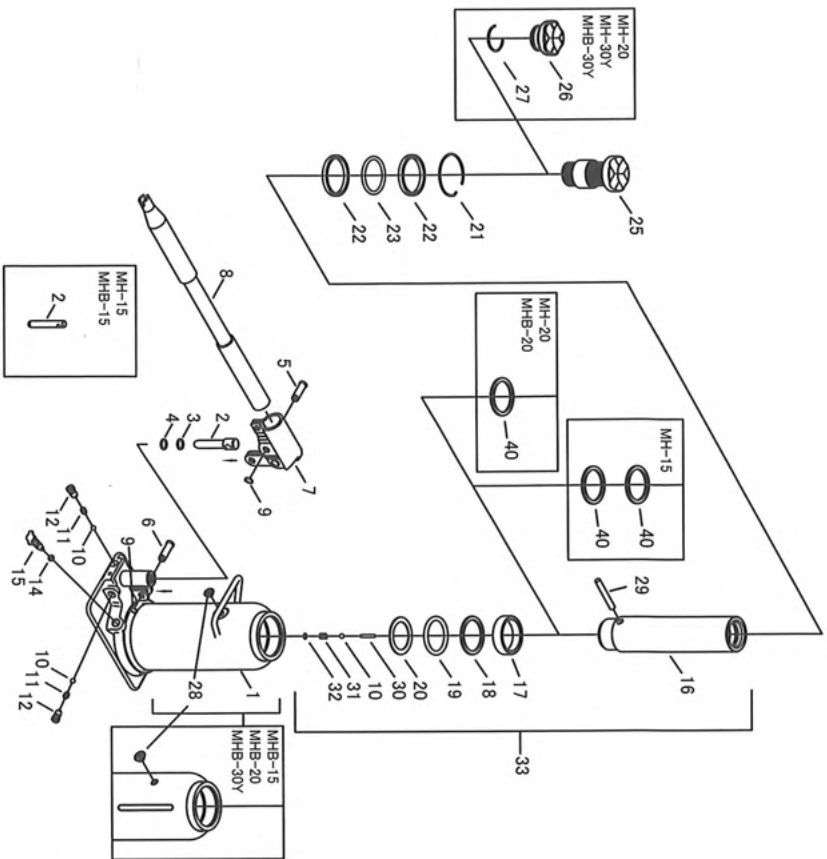
1. The jack should be used on level firm ground where ever possible.
2. It is recommended that the wheels of the vehicle be chocked and that no person should remain in a vehicle that is being jacked.
3. No person should place any portion of their body under a vehicle that is supported only by a jack; use vehicle support stands.

Directions for use:

- (1) To raise: use handle to turn release valve firmly to right, locate handle in socket and pump.
- (2) To lower: use handle to turn release valve slowly to the left, no more than two turns is necessary.
- (3) After use and before stowage, fully retract ram and pump plunger

To add Oil: Push ram down fully, remove rubber plug from reservoir, and fill with correct oil to plug hole with jack in upright position.

Proper oil type: Ritch™ Hydraulic Jack Oil or equivalent.



Part No.	Description	Part No.	Description	Part No.	Description
1	Body Assy	12	Valve Plug	25	Adjusting Screw Assy
2	Pump Plunger	14	Release Packing	26	Supporting Plate
3	Pump Back-up Ring	15	Release Assy	27	Snap Ring
4	Pump Packing	16	Ram	28	Oil Plug
5	Pump Plunger Pin	17	Ram Packing Seat	29	Horizontal Pin
6	Pump Stay Pin	18	Ram Backup Ring	30	Vertical Pin
7	Handle Socket Assy	19	Ram Packing	31	Ram Spring
8	Handle	20	Ram Packing Stopper	32	Ram Spring Stopper
9	Snap Ring / Push Nut	21	Snap Ring	33	Ram Assy
10	Valve Ball	22	Stuffing Ring		
11	Valve Spring	23	Cylinder Packing		



MASADA SEISAKUSHO CO., LTD.

TOKYO JAPAN

Owner's Manual for Hydraulic Bottle Jack



Model : MH-10
Working Load Limit: 10,000kg

Model : MH-15
Working Load Limit: 15,000kg

Model : MH-20
Working Load Limit: 20,000kg

Model : MH-30Y
Working Load Limit: 30,000kg



Model : MHB-10
Working Load Limit: 10,000kg

Model : MHB-15
Working Load Limit: 15,000kg

Model : MHB-20
Working Load Limit: 20,000kg

Model : MHB-30Y
Working Load Limit: 30,000kg

Manufactured to AS/NZS2693:2007 in Japan



Distributed by :

Karmot Pty Ltd

Unit D, 26 Penny Place,
Arndell Park, NSW, 2148
P h : 02 9622 7388
Fax : 02 9622 3922

sales@karmot.com / www.karmot.com